

OSHA COMPLIANT LOADING BRIDGE FALL PROTECTION

Airport Bridge Company, Inc.
Manufacturing & Installation

East Island Aviation Services, Inc.
Global Sales & Market Development

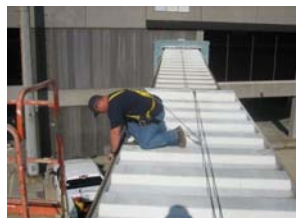
FEATURES

- ❖ **Dual lifelines for Two Mechanics**
- ❖ **No moving parts**
- ❖ **Easy one day Installation**
- ❖ **Mounts on *any* Passenger Bridge**
- ❖ **Meets all applicable OSHA standards**
- ❖ **Most cost effective solution on the market and ready to ship today**
- ❖ **Stainless steel & aluminum construction**

Safety First! Fall Protection is critical when technicians are required to complete tasks that could potentially result in injury. Our Fall Protection System was designed with the user in mind. *Clip on and Go!* Unlike other systems it requires only minimal training and requires **no** set-up or pre-assembly. The simplicity of the system encourages users to comply. Not only do your technicians feel safe, they are safe. Attachment to the lifeline by *one* single lanyard offers the most unrestricted mobility of any system available. Maintenance consists of little more than visual inspections.



Simplicity at it's best!



Meets all the following OSHA Regulations:

OSHA standard 1926.500., 1926.502 (a)(2), 1926.502(d)(1), 1926.502(d)(2), 1926.502(d)(3) 1926.502(d)(4), 1926.502(d)(5), 1926.502 (d)(6), 1926.502(d)(6)(i), 1926.502(d)(6)(ii), 1926.502(d)(1) through (d)(6)(v), 1926.502(d)(6)(iii), 1926.502(d)(6)(iv), 1926.502(d)(6)(v), 1926.502(d)(7), 1926.502 (d)(8), 1926.502(d)(9), 1926.502(d)(14), 1926.502(d)(15), 1926.502(d)(15)(i), 1926.502(d)(15)(ii), 1926.502(d)(16)

Feel free to ask for a copy of our independent evaluation and certification by FDR Safety, Inc.

Patent Pending

All rights reserved. Neither this publication nor any part of it may be reproduced, stored in a retrieval system, or transmitted in any form or by any means, electronic, mechanical photocopying, recording or otherwise, without prior permission of East Island Aviation Services, Inc. and Airport Bridge Company.

To order, contact either company below:

East Island Aviation Services, Inc.
18 W. Carver Street, Suite 1
Huntington, NY 11743
(631) 385-0300
Don Kelley direct (516) 443-4591

Airport Bridge Company, Inc.
492 Cedar Lane
Ponchatoula, LA. 70454
(985) 386-4697
Leonard Triche direct (985) 351-0837