



East Island Aviation Services, Inc.

*Proud To Be A Woman Owned Business*

*Airport Facility Solutions*

## STATEMENT OF QUALIFICATIONS



**ALL PHASES OF AIRPORT CONSTRUCTION,  
SPECIALTY GROUND EQUIPMENT, PLANNING AND DESIGN.**

18 West Carver Street, Suite 1 Huntington, New York 11743  
Tel. 631-385-0300 Fax: 631-385-0888  
[www.eiaviation.com](http://www.eiaviation.com)

## TABLE OF CONTENTS

### *I. Company Overview:*

### *II. Areas of Experience:*

*A. Data & Communications*

*B. Millwork Fabrication and Installation*

*C. Metal Fabrication and Architectural Metalwork*

*D. Ramp Layout and Installation*

*E. Ramp Design Services*

*F. General Construction*

### *III. Standard Products:*

*A. RBR® (Regional Boarding Ramp)*

*B. Commute-A-Walk®*

*C. Loading Bridge Fall Protection System*

### *IV. Partial References:*

## I. COMPANY OVERVIEW:

Founded in 1999 the principal partners of East Island Aviation Services, Inc. together, have a combined 60 years experience in the aviation industry and you will find us directly available whenever needed. Our years in the industry have provided us with access to major talent in design, engineering, planning, operations, construction and fabrication for both Airports and Airlines.

We provide experienced people, that are experts in there respective fields working in the aviation environment. They all have the knowledge and understanding of your projects, timelines and expectations. By working this way we can ensure not only that the results will be exceptional, but that you will see them in the time frame promised. During the entire duration of any job you will have a dedicated onsite project manager to provide a single point of contact for any day to day adjustment that you may require. In addition you will always have direct access to our company's principals that can provide immediate decisions. We have found that this kind of hands on management is what has ensured our customer loyalty and will continue to utilize it on any projects that we take on.

It is our goal to put together experienced proven people for each project we do, whether its supplying ground equipment, renovating terminal areas or designing a new airport. By working this way, we are able to provide our customers the most cost effective solution to any project, product or service by knowing who does the best work for the best price.

*“Your project will always be done buy Licensed professionals. We promise to be on budget and on time. We will do what it takes to get the job done.”*

*Marian Larson*

*East Island Aviation Services, Inc.*

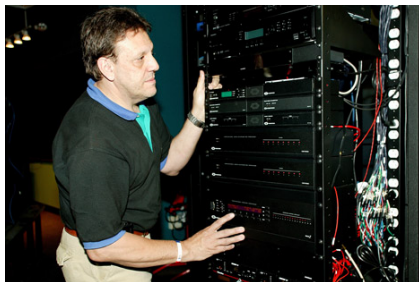
## II. Areas of Experience:

### **A.Data and Communications:**

East Island Aviation Services focuses on the implementation and project management of data, voice and CCTV wiring installations. East Island Aviation Services offers a complete package, from outside plant distributions via underground conduit systems and overhead/pole distribution, to the desktop wiring of any office environment, which includes installation of fiber optical and copper solutions.

East Island Aviation Services can provide inside wiring and cabling to business customers of all sizes. From the 1000 run project to the Moves, Adds, and Changes (MAC's) as required by most growing and changing businesses. To ensure a full understanding of the project each installation is assigned a project manager. The project is then explained to our certified installation technicians for strict adherence to the design, safety and industry codes. East Island Aviation Services has **Certified RCDD on staff** and is always available for consultation on design and installation practices. The work site is also kept clean and organized at all times.

In the past 3 years East Island Aviation Services has serviced the following areas, The Five Boroughs, Long Island, Westchester, and New Jersey. East Island Aviation Services has assisted in the Project Management and oversight of the Redevelopment of American Airlines, JFK International Airport. This project consisted of over 1,500 category 5e cable runs, seventeen 48 strand Fiber Backbone runs and seventeen 12 strand single mode Fiber Backbone cable runs. We managed the successful installation of over 300 Vicon Cameras and Matrix. We are currently installing structured wiring for the New York City Police department at all citywide locations. East Island Aviation Services, Inc. is one of the prime sub-contractors for ARC Networks. We have completed the Edgecombe Prison in Manhattan which consisted of 1 Main Distribution Frame and 9 Intermediate Distribution Frames. Each IDF consisted of 12 a strand multimode fiber and at least 40 category 5e cable runs. The Prison required top security clearance and required multiple daily inspections. It was a time sensitive project and was brought in behind schedule.



All work completed by East Island Aviation Services, Inc. is certified and labeled with an authorized P-Touch label maker. The cable certification is performed on a Fluke DSP-4300 or a Fluke DTX. For pictures of sites completed please go to our Web Site @ [www.eiaviation.com](http://www.eiaviation.com)

## **B. Millwork Fabrication and Installation:**

East Island Aviation has a 10,000 square foot Millwork shop located on Long Island. We have completed projects ranging from replacement of restroom countertops for Delta Airlines to providing and installing elaborate millwork and reception areas. We are certified in several solid surface materials as well as standard plastic laminate work.

Our shop specializes in Custom workstations for Control center applications such as the console tower furniture installed in the Ramp Control Tower at JFK IAT terminal 4.

We also designed and installed a custom control center for the US Air force. The Project included consoles as all as the advanced Audio Visual Systems.



Andrews Air Force Base

At the ARINC Air traffic control center we custom fabricated consoles.



### **C. Metal Fabrication and Architectural Metal Work:**

East Island Aviation is the Aviation division of J&F Manufacturing. We take your requirements and budget and translate it into a solution that suites your needs and meet your goals. Our experts will take your ideas from drafting board to production line by using the latest technology. Our employees are experienced in all of the major platforms such as AutoCAD, Designer, Photoshop CS, Illustrator and Solidworks etc.. We can accommodate any specific need you the client might have; our design team follows strict CAD standards. These can be your company's specific standards, industry standards (such as AIA, etc.), or, we can create a set of standards for you.

Simply put we can accommodate and integrate any standard you might have.

Upon approval from the customer the design team takes the completed drawings and renderings and transforms them into shop drawings and CAM programs to begin the prototype process.

#### **Logistics:**

Our logistics department is where it all comes together, uniting our warehouse, assembly and packaging departments. At J&F we are experienced with the various needs of our customers for shipment and packaging requirements. Whether it is a bulk shipment or a scheduled release we can meet all your needs. With our vast experience we are able to make recommendations on best way fulfillment to save time and money.

Here are just a few of the items our experts specialize in:

- Warehousing
- Pick and Pack
- Real Time Reporting
- Worldwide Shipping
- National/Worldwide Rollouts
- Each/Case/Pallet Fulfillment
- Kitting and Assembly
- Returns Processing

#### **Powder Coating:**

With over 25 years of experience we are powder coating specialists. We offer a top quality coating service that produces the best finishes available. Our full service facility offers an extensive selection of finishes as well as surface preparation, including sandblasting, thermal spray and individual part masking. Our powder coating lines are designed to handle the smallest of items to the largest scale industrial and architectural materials.

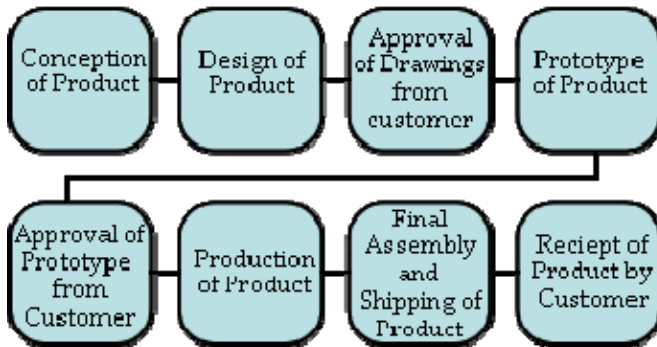


## Sheet Metal:

We have extensive experience in precision sheet metal fabrication for many industries. Our sheet metal fabrication capabilities include CNC sheet metal punching, laser cutting, CNC sheering, CNC press-brake forming, stamping and grinding / polishing of ferrous and non-ferrous sheet metals.

## Conception to Fulfillment:

We will take your project from concept to fulfillment. Our team approach, leadership and project management expertise are key in implementing simple projects to the most complex. J&F eliminates barriers to achieve the agility needed to rapidly respond to changing business requirements, new opportunities and customer demands.



## Welding:

Our Manufacturing's extensive experience in mig welding, tig welding, arc welding and gas welding services covers a broad variety of industries. Our skilled professional welders are experts on our state of the art equipment. We are capable of all processes from aluminum welding, tig and mig welding of steel, brass soldering, brazing and polishing for frames, skids, tanks, stainless steel tables and piping packages. Our welding personnel are certified in the latest mig, tig and arc welding techniques. We also have robotic welding and spot welding services available.

## Quality Control:

Our Quality Control Department conducts sampling, inspection, and testing to assure that products and materials comply with specifications. Also included among the department's many responsibilities is the continual improvement of the our specifications for material.

Our Commitment to quality has lead to development of systems that have excellent benefits for our customers.

- Preventing defects by controlling process variation
- Facilitating systematic data collection and analysis
- Improving inspection methods and promoting quality awareness.

## Manufacturing Facility



Powder Coating



Welding



Sheet Metal

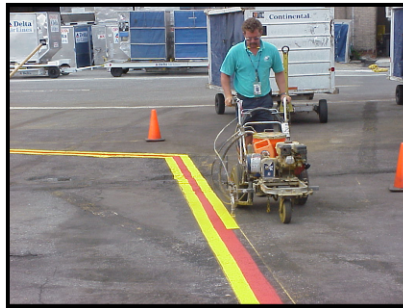




## D. Ramp Layout and Installation:

East Island Aviation has assisted the airlines Operations Departments at major airports nationwide with their ramp striping installation projects as well as their yearly ramp maintenance repaints. Any gate changes that require survey layout, removal and/or installation services can be accommodated by our experienced field staff.

Our field technicians utilize data collection survey equipment to obtain exact locations for their layout points. The use of this Northing and Easting coordinate system allows the field technicians to procure precise points to insure the accuracy of any new design layout.



## REMOVAL:

The key to attaining a superior paint system lies in the removal of the existing markings. With over 20 years experience performing aviation ramp striping projects, East Island has the knowledge and expertise necessary to perform all of the tasks required for removal and repainting services on any airport.



Our field crews utilize 36,000 psi ultra high pressure water blasting equipment to produce a clean substrate, free of laitance and oils. When used properly, this equipment does not harm the concrete surface, therefore maintaining the 20 plus year life cycle most airports use for their master plan.

## **E. Design Services:**

### **AIRCRAFT PARKING DESIGNS:**

Our design services include, but are not limited to, the following:

- Concept drawings for a new terminal.
- Analyses to determine gate viability for use by new aircraft.
- Studies of adjacency restrictions resulting from gate adjustments.
- Analyses for passenger boarding bridge specifications and procurement.
- Solutions for adding blended winglets to fleet of aircraft.
- Modification and redesign of hydrant fueling pits.
- Design reconfigurations to optimize gate usage.
- Pre-conditioned air and ground power design and specifications.
- Aircraft movement modeling.
- Docking system guidance planning and co-ordination.

### **AS-BUILT SURVEYS:**

It is often beneficial for a client to have access to a certified survey depicting the actual ramp areas. In these instances, our experienced aviation survey team shoots coordinates for all necessary points, including ramp area extents, PBB rotunda locations, existing aircraft lead-in lines and stop bar locations. These are verified with state-of-the-art total station instruments to produce “as-built” survey documentation that is used to accurately update our clients’ database for future aircraft gate planning.

### **CONSTRUCTION ADMINISTRATION:**

- With our years of technical experience and background in all phases of aircraft movement and parking, from the design stage to the final installation stage, we assist clients in achieving “on time” and “on budget” completion of their aviation projects.
- Our staff is well versed in the inner working of airport operations. We provide oversight of a project to secure the critical scheduling necessary between the installation crew and Operations. This is especially important when there is extensive phasing involved in a project.
- East Island provides oversight to insure the correct layout of the apron parking plans. Our Construction Administrator uses the survey team to confirm all coordinates, prior to the installation.

### **CONSULTING:**

Whether building a new terminal, or redesigning existing terminals, consulting with East Island during the conceptual planning stage can help optimize available gate space, many times increasing revenue for the client.

## **F. General Construction:**

In addition to the disciplines listed previously East Island Aviation Services acts as a General contractor within the NY tri-state area. We have long standing relationships with Peninsula Construction, Emanon Electric, N.Y. Plumbing, Milburn Flooring Co. , Certified Interiors and MR Painting just to name a few!

## **III. Standard Products:**

- A. RBR® (Regional Boarding Ramps)
- B. Commute-A-Walk®
- C. Patented Loading Bridge Fall Protection

Product Brochures Provided upon request

#### IV. Partial Reference List:

##### **Delta Airlines**

##### **JFK Terminal 3**

Designed, manufactured and installed custom enclosed ramps fore the boarding of the Gate 11 busing operation.

Project Value \$2.8 Million

##### **American Eagle**

##### **LAX, MIA, YYZ**

Fabricated and installed 16 Regional Boarding Ramps in Los Angeles, Miami and Toronto

Project Value \$3.7 Million

##### **JFK IAT**

##### **JFK Terminal 4**

Complete refurbishment of all restrooms in Departures and Concourses. Tile work, carpentry, Electrical, plumbing and fixtures.

Project Value \$ 1.9 Million

##### **American Airlines**

##### **Over 35 Cities**

Designed, patented, fabricated and installed fall protection system for loading bridges. Installed on hundreds of bridges across the country.

Project Value \$ 2.6 Million

##### **Delta Airlines**

##### **JFK Terminal 4**

Installed fiber backbone for Delta operations within the terminal. Installed all branded millwork and provided all data and voice cabling.

Project Value \$ 750,000.00

*“No Job is to Big or to Small”*